

# Pat-Add AF 43

## Polymeric Defoamer for WB Systems



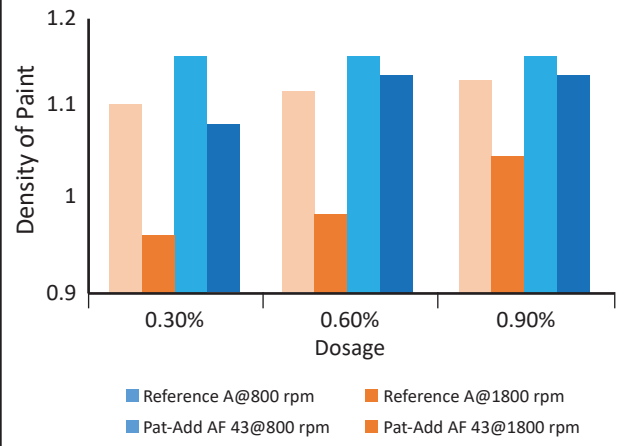
PATCHAM

Pat-Add AF 43 is an oil and silicone free, non-ionic polymeric defoaming agent.

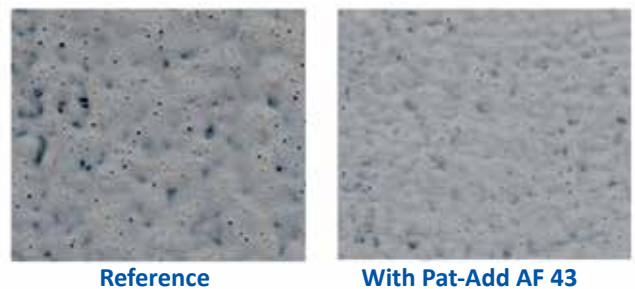
### Features of Pat-Add AF 43

- Contributes to substrate wetting making it beneficial for coating low surface energy substrates
- Dispersible in aqueous systems with mild dispersion forces
- The product is specifically for applications such as low PVC systems, where it shows improved film properties versus oily and silicone defoamers
- Highly suitable for use in dispersion paints, for alkaline or acid systems, aqueous air-drying paints and plasters

Measurement of Density of Low PVC Emulsion Paint with Defoamers at various mixing speed



Foam Roller Application of 40% PVC Emulsion Paint



PUD Matt Finish Topcoat



Reference

With Pat-Add AF 43

- Architectural emulsion paint, Waterborne, Industrial paints, Waterborne Wood coatings
- Addition Stage : Millbase
- Recommended Dosage : 0.2-0.6 % by weight on total formulation

# Pat-Add AF 75

## Silicone free Polymeric air releasing agent

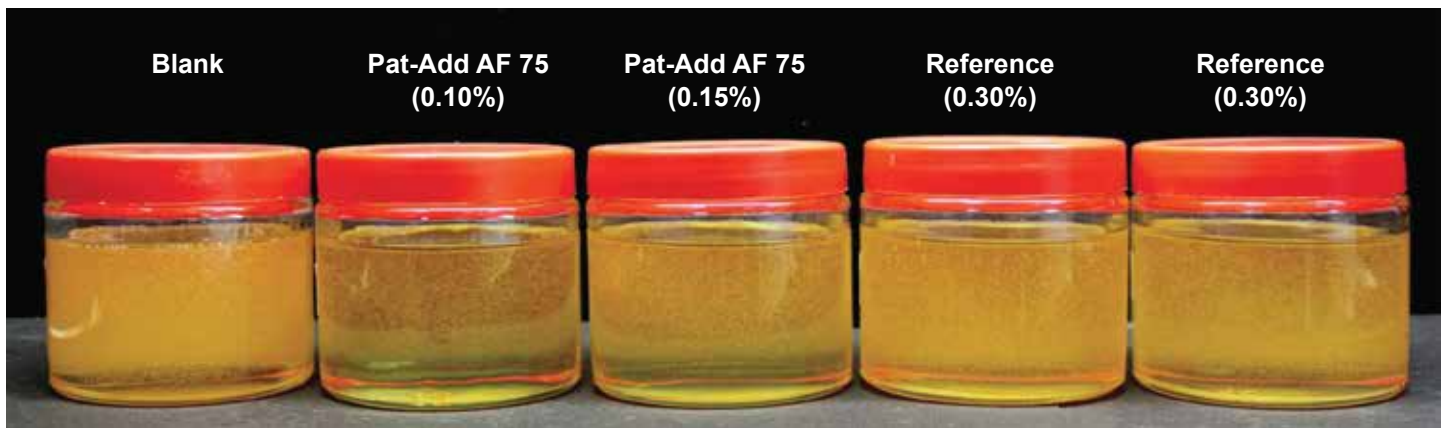


PATCHAM

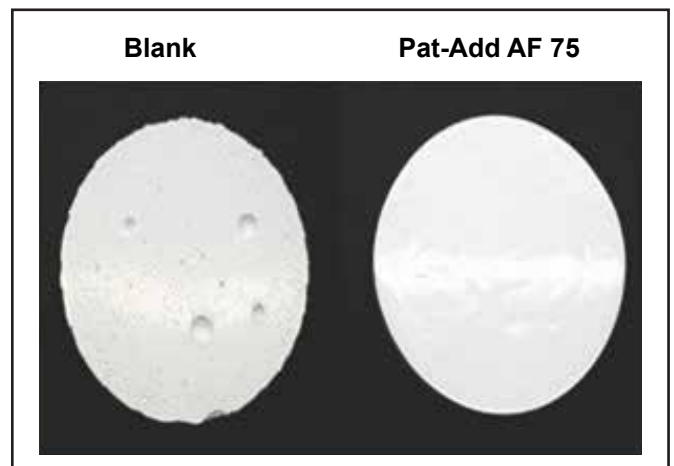
**PAT-ADD AF 75** prevents air entrapment in ambient temperature curing systems as well as during pultrusion of composites and manufacturing of gelcoats.

## Features of Pat-Add AF 75

### Effectivity of Pat-Add AF 75 at low dosage



- Faster air releasing properties
- Effective even at low dosage
- Prevents porosity in final mold or cast
- Suitable for main processing application
- Because of its higher surface activity, it ensures good air release even in highly thixotropic formulations
- Stage of Addition: Premix Addition  
Dosage:  
For clear system – 0.1 to 0.15 %  
Pigmented system – 0.2 to 0.5 %



# Pat-Add AF 76

Silicone free Polymeric air releasing agent for  
UPR clear laminates and gelcoats

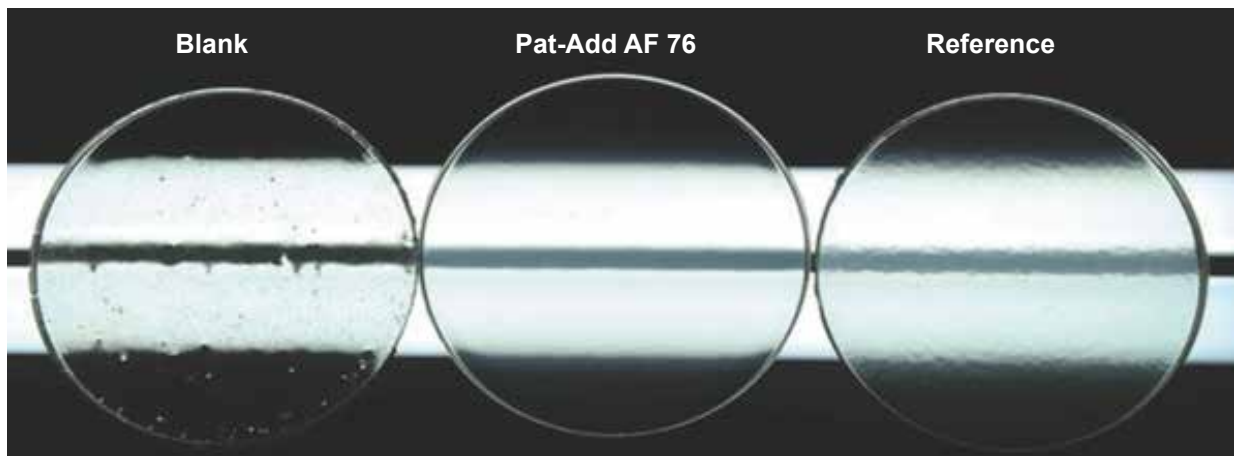


PATCHAM

Pat-Add AF 76 prevents air entrapment in ambient temperature curing systems without affecting clarity of final cast or gelcoats.

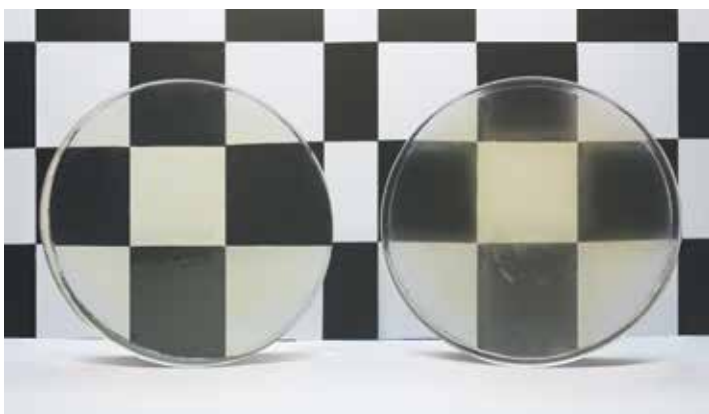
## Features of Pat-Add AF 76

### Effectivity of Pat-Add AF 76 in clear cast system



- Faster air releasing properties
- It prevents porosity in final mold or cast.

### Clear laminates



Pat-Add AF 76

Reference

- Suitable for clear laminates and cast application
- Because of its higher surface activity, it ensures good air release even in highly thixotropic formulations.
- Stage of Addition: Premix Addition  
Dosage:  
For clear system – 0.3 to 0.5 %