

Pat-Add FL 9

Polymeric surface modifier



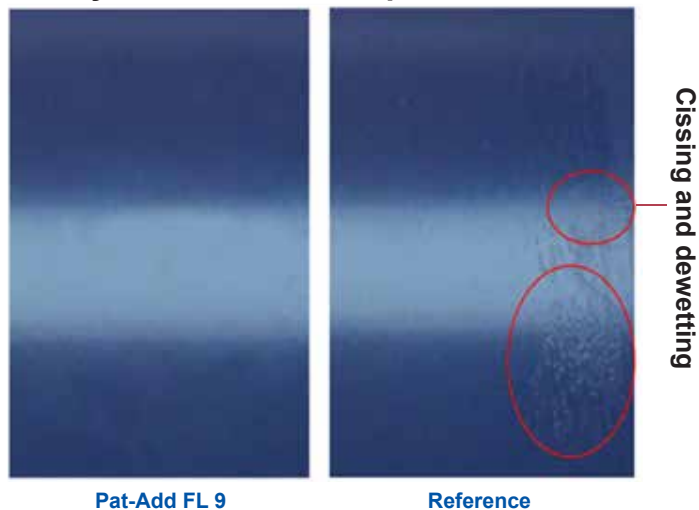
PATCHAM

Pat-Add FL 9 is a polyacrylate flow and leveling additive for all solvent borne coatings. Pat-Add FL 9 is highly recommended for coil, general industrial, protective and automotive coatings.

Features of Pat-Add FL 9

- Effective flow and leveling additive
Silicone and fluoro free
- Eliminates orange peel, craters, pin holes and waviness
- Promotes the development of uniform surface tension across the film
- Contributes to defoaming
- Contributes to smooth film with high DOI
- High transparency in lacquers and clear film
- High thermal stability

Polyester Melamine Top Coat Blue



2K PU Black (Reflection Under Tube Lights)



- Compatible with wide spectrum of resins and solvents
- Suitable for clear and pigmented systems
- Stage of Addition:
Mill base & Letdown
- Dosage:
For clear and pigmented system, 0.4-2.0%
on total weight of paint formulation

Pat-Add FL 9

Reference

Pat-Add LE 1019

Polyether modified polysiloxane



PATCHAM

Polyether modified polysiloxane surface modifier for Solvent free, solventborne and waterborne high performance coatings to improve substrate wetting, flow and leveling.

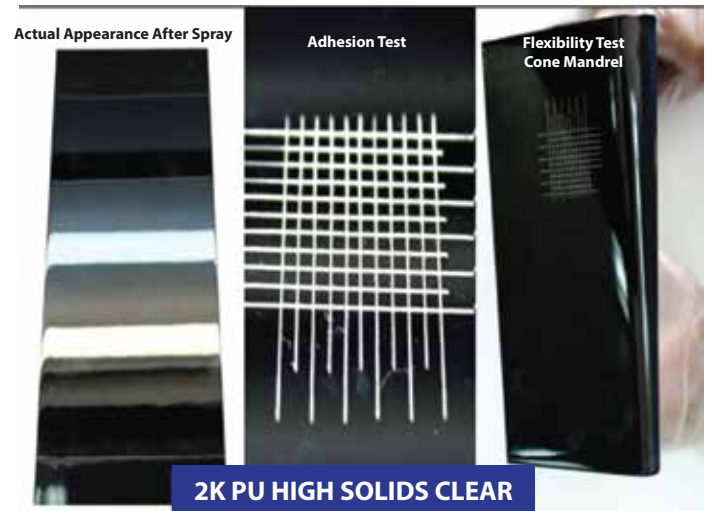
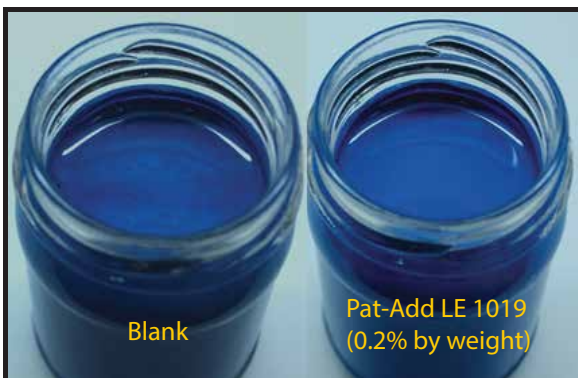
Features of Pat-Add LE 1019

- Reduce surface tension of coatings
- Excellent substrate wetting, flow and leveling properties
- It improves surface slip and gloss of final film

1K gold pearl base coat



1K Acrylic Melamine stoving blue top coat



2K PU HIGH SOLIDS CLEAR

- No adverse effect on intercoat adhesion
- Reduces in can problems like benard cells and flocculation
- Improve orientation of effect pigments
Matting agents, Aluminum and Mica pigments
- Compatible with wide spectrum of resins and solvents
- Stage of Addition: Millbase as well as let down stage of production
- Applications : Automotive OEM, Auto Refinish, Wood Coatings, Industrial Coatings

Pat-Add LE 1020

Polysiloxane based leveling additive



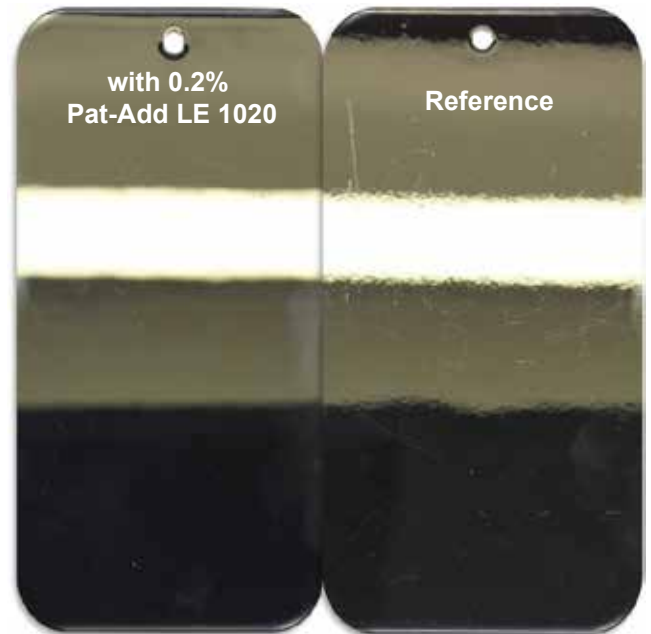
PATCHAM

Pat-Add LE 1020 is linear polyether modified polysiloxane in xylene. Highly recommended for solvent borne industrial and automotive coatings.

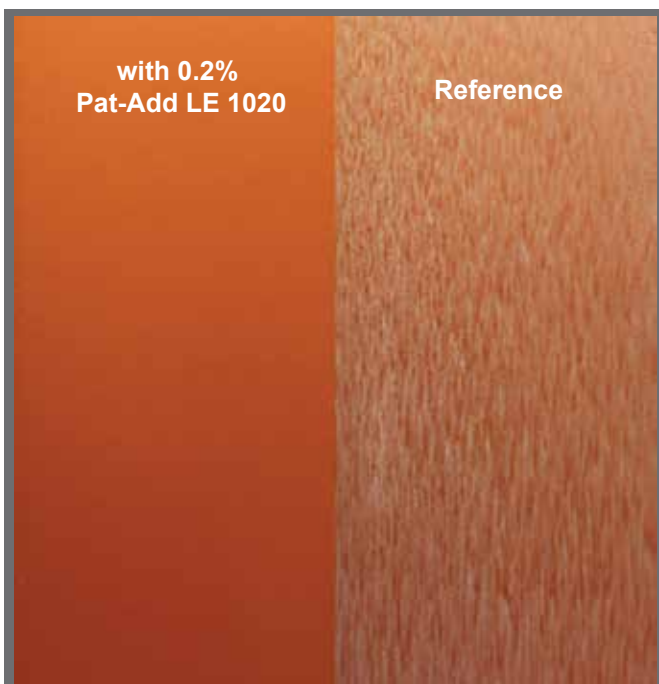
Features of Pat-Add LE 1020

- Excellent flow and leveling at minimal dosage
- Eliminates craters, orange peel, cissing defects
- Provide haze free film with “wet look effect”
- Improve orientation of effect pigments (Matting agents, aluminum, pearl and mica pigments)
- No adverse effect on intercoat adhesion

Automotive 2K PU Black Topcoat



Automotive 2K PU Basecoat Orientation of Special Effect Pigments



- End Use Applications
Industrial coatings
Automotive coatings
- Recommended Dosage
0.1% to 0.5% on total formulation
- Compatible in wide range of solvent borne resins and solvents

Pat-Add LE 1030

Leveling Agent for Waterborne Systems



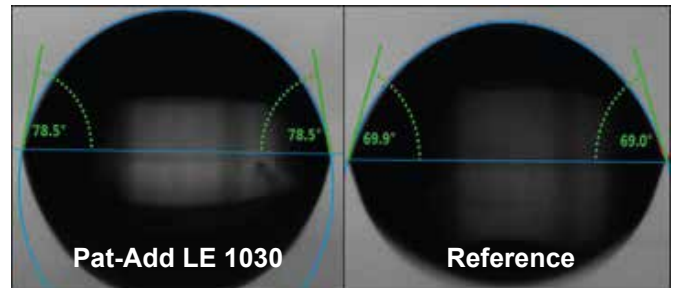
PATCHAM

Pat-Add LE 1030 is a modified polysiloxane leveling agent exhibiting outstanding substrate wetting and prevents craters and pinholes in coatings applied on low surface tension substrates.

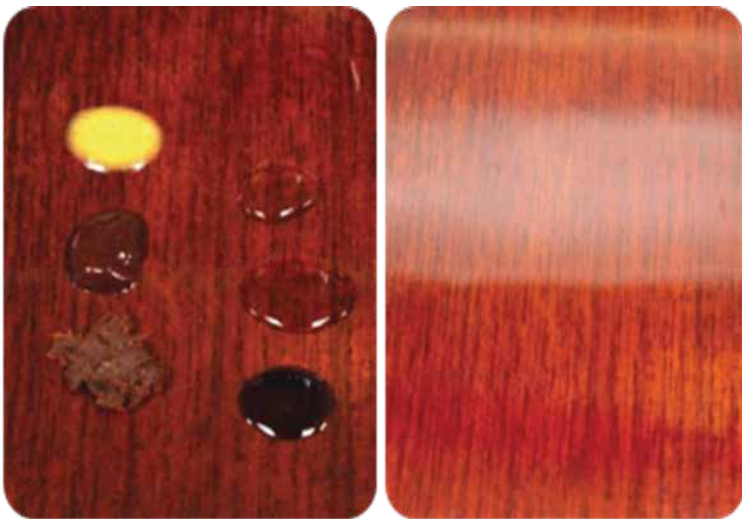
Features of Pat-Add LE 1030

- Improves surface wetting
- Eliminates surface defects
- Low foam stabilization
- Optimizes DOI of the film
- Improves film stain resistance

Water Contact Angle of 2K PU WB



Pat-Add LE 1030 in WB Floor Coating
Topcoat Gray



Stain resistance test

Stains dried for 24 hrs. on the panel.
No marks after removal of the stains

- Suitable for application in various resin systems:
 - PUD systems, Water borne Epoxy systems, Alkyd emulsions, 2K PU systems, Acrylic systems
- Stage of Addition: Letdown
- Dosage: 0.2-0.8% total weight formula

Pat-Add LE 1066

Grafted polyether modified polysiloxane



PATCHAM

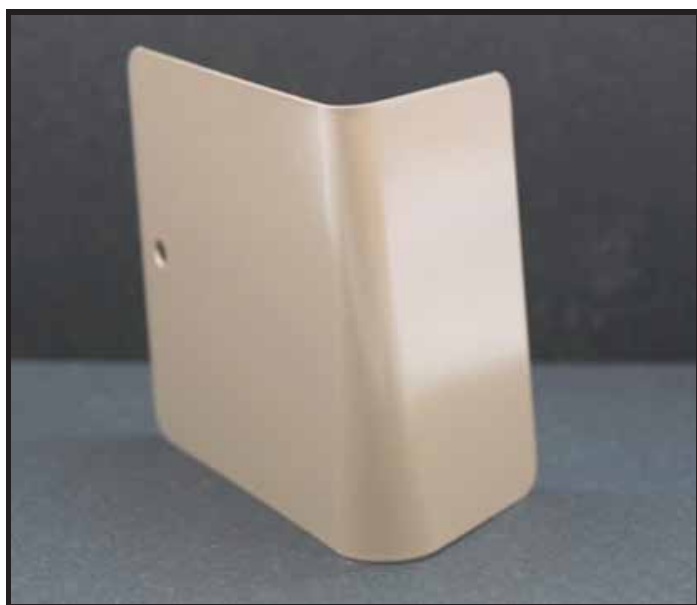
Pat-Add LE 1066 is leveling additive with slight defoaming activity for solventborne and solvent free Epoxy and PU Industrial, Protective and Floor Coating systems. It provides excellent surface smoothness. This product is suitable for use in pigmented as well as clear coats.

Features of Pat-Add LE 1066

- Specially designed for Industrial, Protective and floor coating systems
- Highly effective leveling agent
- Excellent compatibility, high transparency
- Effective in EP, PU and Aspartic solvent borne and solvent free coating systems



Solvent free Epoxy floor coating



Solvent borne PU coating

- For solventborne and solvent free systems
- Point of addition: Any stage of paint production
- Additive dosage as supplied on total paint formulation : 0.1 to 0.6%