

# Pat-Add AF 34

## Polysiloxane modified Defoamer for WB systems



PATCHAM

**Pat-Add AF 34** is an oil and VOC-free modified polysiloxane hydrophobic polymeric defoamer and deaerator.

### Features of Pat-Add AF 34

- Provides high spreading characteristics and highly effective in lowering surface tension to destroy the foam lamella
- The functional groups concentrate at the liquid/air interface to prevent stabilization of bubble by surfactants
- The partially insoluble active deaerating molecule promotes diffusion of air from the foam bubble into the surrounding, thus totally eliminates microfoams
- Suitable for all methods of application like brushing, roller or air assisted or airless application
- No adverse affect on final film's long term properties

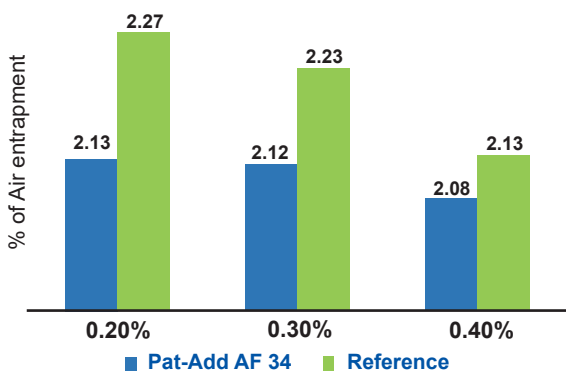
Styrene Acrylic Gloss Paint  
0.4% Dosage



Pat-Add AF 34

Reference

Styrene acrylic emulsion gloss paint



- Architectural emulsion paint, Waterborne Industrial paints, Waterborne Wood coatings
- Addition Stage: Millbase
- Recommended Dosage: 0.2-0.6 % by weight on total formulation

# Pat-Add AF 35

## Universal polysiloxane based defoamer



PATCHAM

Pat-Add AF 35 organically modified polysiloxane defoamer for aqueous and solventfree formulations.

### Features of Pat-Add AF 35

- Effective at low dosages
- Can be combined with other chemistry defoamers
- Eliminates microfoaming
- Excellent for high shear manufacturing process as well as low shear situations
- Outstanding deaeration in aqueous paints
- Independent of pH

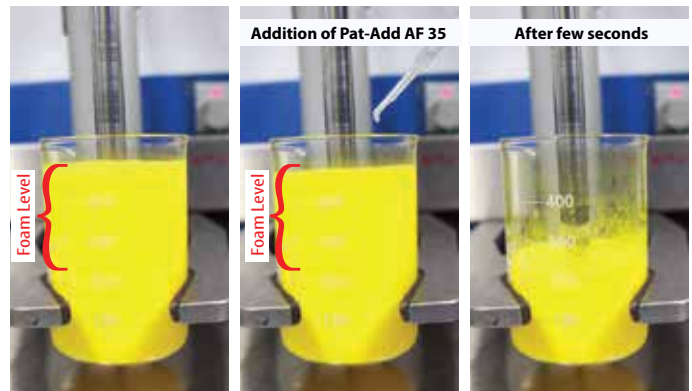
#### Epoxy Solventfree Floor Coatings



Pat-Add AF 35

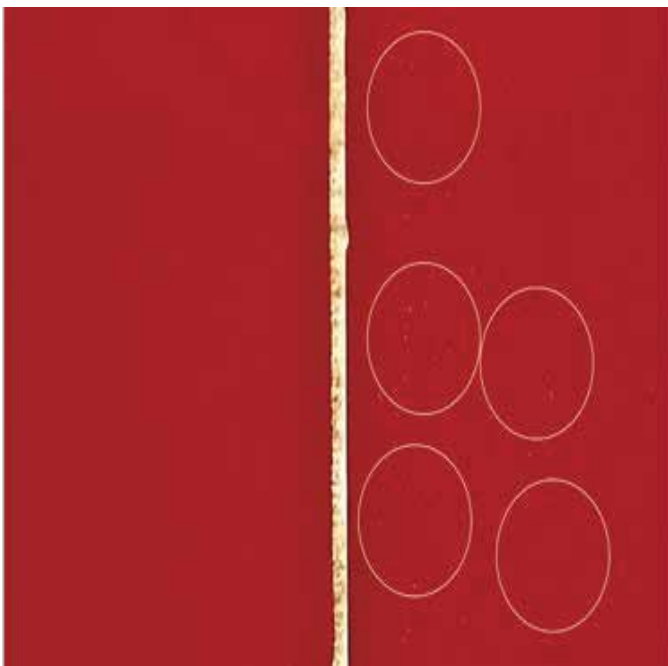
Reference

#### Defoaming Efficiency of Pat-Add AF 35 in WB Pigment Dispersion



Foam that occupies most of the volume collapse as addition of Pat-Add AF 35 in WB Pigment concentrate

#### Microfoams in Pigmented Polyaspartic Coatings



Pat-Add AF 35

Reference

- Recommended for solventfree floor coatings, Aqueous pigment dispersions
- Stage of Addition: Millbase
- Dosage: 0.1-0.8% total formulation

# Pat-Add AF 62

## Silicone Free Defoamer for SB Systems



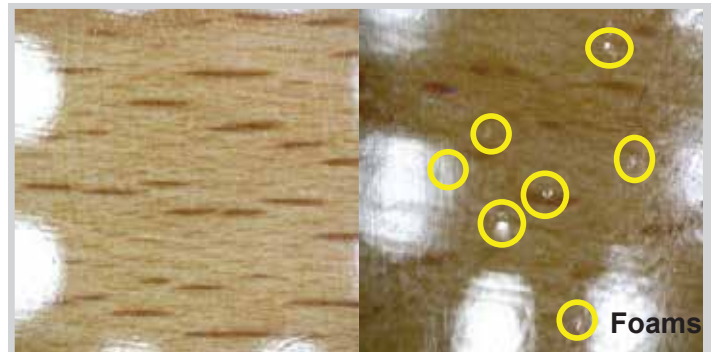
PATCHAM

**Pat-Add AF 62** is a strong defoaming and deaerating agent for solvent-borne coatings; especially for wood coatings, coil coatings, automotive coatings, industrial coatings and inks.

### Features of Pat-Add AF 62

- Strong defoaming properties, requiring only low dosages
- No side effects like gloss reduction, haze, intercoat adhesion, craters and cissing
- Provides clear and transparent films; it is highly recommended for clear coats and varnishes
- Compatible in a wide range of resins and solvent systems

#### 2K PU Wood Topcoat Clear



Pat-Add AF 62

Reference

2K PU clear for wood coating with the dosage of additives at 0.2%

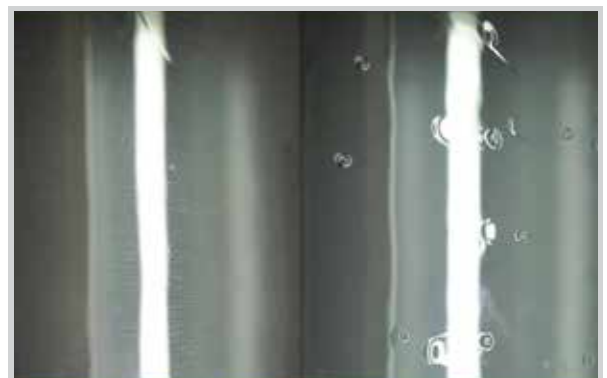


Pat-Add AF 62

Reference

2K Polyaspartic Paints with the dosage of additives at 0.6%

- Stage of Addition: Mill base and Letdown stage
- Dosage: 0.05 to 0.4% in total formulation
- Suitable for coating applied using various application methods, such as brushing, airless spraying, roller



Pat-Add AF 62

Reference

2K PU clear for wood coating with the dosage of additives at 0.2%

# Pat-Add AF 70

## Defoamer - Solventborne & Solventfree system



PATCHAM

**Pat-Add AF 70** a polysiloxane and organic polymer defoamer and air release agent for solvent-borne and solvent-free systems during production and application

### Features of Pat-Add AF 70

- Low risk of gloss reduction, haze, craters and cissing
- Strong defoaming and air releasing



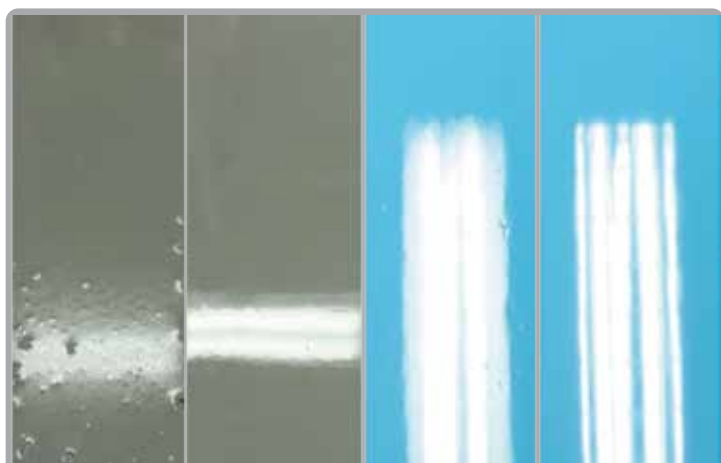
Reference

Pat-Add AF 70

6-7 mm thickness



7-8 mm thickness



Reference

Pat-Add AF 70

Reference

Pat-Add AF 70

- **Protective and Maintenance Coating**  
Epoxy Intermediate, Acrylic Polyol, Polyester polyol, polyaspartic Solvent free polyether polyol, thermoplastic Acrylate
  - **Solvent Free Floor Coating**  
Solvent free Epoxy & PU system
  - **Solvent Free Colorants**  
Epoxy Colorant  
Castor oil base colorant for Floor Coating
  - **Dosage: 0.5-1 % on total formulation**
- Can be used in the grinding stage as well as post addition stage**

# Pat-Add AF 72

## Deaerating and Defoaming Additive



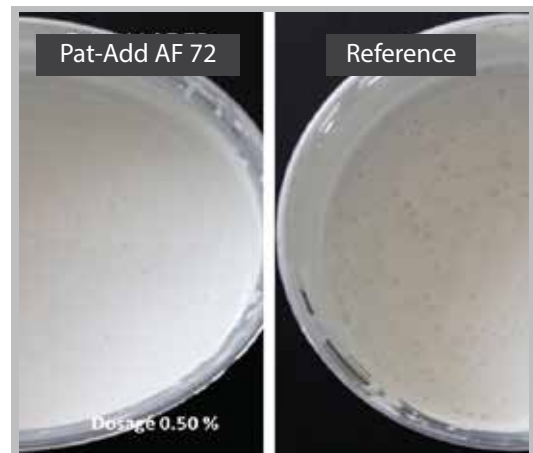
PATCHAM

**Pat-Add AF 72** is a polysiloxane based defoamer for solvent-borne coatings. Highly recommended for the prevention of formation of foam during production, filling and application.

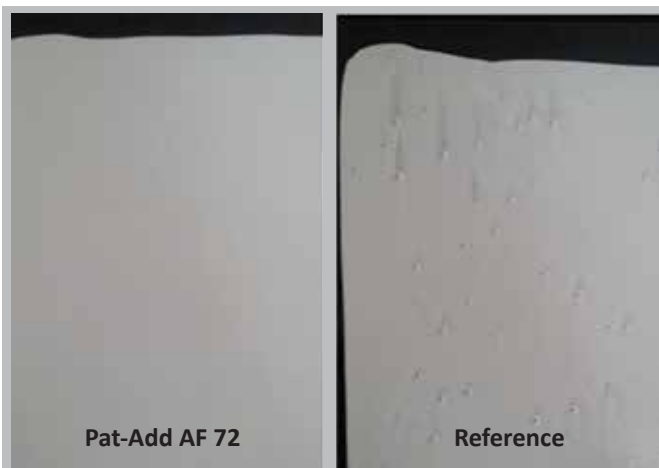
### Features of Pat-Add AF 72

- Effective defoaming and deaeration
- Enables a bubble-free paint mixture without adverse effect on application
- Excellent performances in application of systems with high risk for air inclusion, such as roller, airless and conventional spray application
- Rapid defoaming action especially for fast cure systems

In-can appearance of Solvent base TPA white



Pouring test of solvent base TPA white on PVC Sheet



Spray Application of 2KPU Clear on Wood Panels



- Stage of addition: Mill base and Letdown
- Dosage: 0.10-0.80% on the total formulation
- Compatible in various solvent-borne resin systems and solvents
- i.e. 2-pack PUR, Long oil/Medium oil/ Short oil alkyd, TPA, Epoxy, Polyester, stoving enamels